



Jaargang: 2021

Nummer: 05

Uitgifte: 15.04.2021

Maritime Regulation of the government-commissioner of April 15th 2021 no. 3 regarding the execution of the Public Health Act in connection with COVID-19 for vessels coming for bunkers, dropping off of samples or cargo operations

Whereas

- in the Netherlands, but also worldwide, there is a pandemic caused by the Coronavirus (COVID-19);
- COVID-19 is a group A infectious disease;
- By Public Health Act, as well as by Ministerial decrees stemming forth from the act, entry to all ports are regulated;
- the medical capacity of the hospital and health service is under pressure;
- in order to prevent further spread of the coronavirus/ COVID-19, several protocols were set in place from March 26th, up to present by the maritime sector, for vessels other than the cargo vessels coming to the city pier, it is desired to have the procedures established by the abovementioned protocol, adopted into an official regulation;

The Government-commissioner of Sint Eustatius;

having read and taking into consideration the advice of the Harbour;

Decides,

to adopt the following Regulation regarding the execution of the Public Health Act in connection with COVID-19 for vessels coming for bunkers, dropping off of samples or cargo operations (Maritime Protocol [Regulation] COVID-19 St. Eustatius of April 15th 2021);

Article 1 Reporting duty

1. The master of ship shall, in accordance to the International Health regulations (IHR 2005 art 37), deliver both the Maritime Declaration of Health and the Health Clearance questionnaire (see appendix) 24 hours prior to arrival in our ports
2. All crew or passengers that have joined the ship within the last ten days, shall be reported to the port authority in accordance with the IHR.
3. The reports mentioned in paragraph 1 and 2 of this article are to be conveyed to the harbor master through the usual channels.

Article 2 Precautions

1. Anyone boarding any vessel travelling from international waters must:
 - a. put on PPE, meeting at least the minimum requirement face mask or respirator, coverall, close eye goggles and gloves. Failure to comply with this will result in admission to the vessel being denied.
 - b. avoid meeting with vessel's crew in closed quarters where ventilation systems might recirculate air, and must remain on deck, bridge wing or wheelhouse.
 - c. keep a safe distance of one and a half meters from the nearest person at all times.

- d. wash hands prior to and after boarding with soap or sanitize with alcohol.
 - e. maintain proper sneezing etiquette by sneezing in a tissue or elbow.
2. Anyone, who is fully vaccinated, boarding any vessel travelling from International waters must:
- a. put on PPE, meeting at least the minimum requirement face mask (type KN95 or N95), and gloves. Failure to comply with this will result in admission to the vessel being denied.
 - b. avoid meeting with vessel's crew in closed quarters where ventilation systems might recirculate air, and must remain on deck, bridge wing or wheelhouse.
 - c. keep a safe distance of one and a half meters from the nearest person at all times.
 - d. wash hands prior to and after boarding with soap or sanitize with alcohol.
 - e. maintain proper sneezing etiquette by sneezing in a tissue or elbow.

Article 3 Category vessels

1. Vessels falling under this regulation can be placed in one of the following categories:
 - a. Type 1 – No physical contact, communication via VHF, buckets and or pouch only
 - b. Type 2 Green light – “Persons who are fully vaccinated on St Eustatius only”
 - c. Type 2 Green light – “4 or 8 entries in the visitors logbook only” if the time between last contact in last port is 10 or less than 10 days.
 - d. Type 2 Green light – “12 entries in the visitors logbook only” if the time between last contact in last port is more than 10 days
 - e. Type 2 Red light.
2. The vessels are placed in the categories by the Public Health department based on the reports provided under article 1.
3. The master shall report a change in the medical situation onboard immediately to the harbor master and agent. The in paragraph 2 mentioned placement of category will automatically be revoked, the present visitors have to leave the vessel and the vessel needs to be interviewed before any new visitors are allowed to board the vessel again.
4. The Public Health Department can deviate from the flow charts (see appendix) whenever deemed necessary.

Article 4 Access prohibited and persons allowed

1. At no point will anyone be allowed to board a type 1 or a type 2 Red light categorized vessel.
2. The following persons, entities or representatives thereof are allowed to board a type 2 Green light “Persons who are fully vaccinated on St. Eustatius only” vessel: Pilots, samplers, cargo representatives, cargo inspectors, PSC- and Health Department officers, once they have been vaccinated twice with an internationally accepted vaccine on St Eustatius.
3. The following persons, entities or representatives thereof are allowed to board a type 2 Green light “4, 8 or 12 entries in the visitors logbook only” vessel: Pilots, samplers, cargo representatives, cargo inspectors, PSC- and Health Department officers.
4. In total not more than 4, 8 or 12 entries (2 pilots + 2, 6 or 10 others) in the port log, per port call, permitted; the max amount of persons will be indicated on the Health Department “Health Clearance”
5. The PSC-, Health Department officers and persons fully vaccinated will not be counted for in relation to the maximum (4, 8 or 12) persons allowed onboard.
6. The fully vaccinated persons, who do not want to be counted for on the 4,8 and 12 categorized vessels, have to show the original or a copy of their COVID-19 vaccination card at the gangway .
7. The crew has to check thoroughly the names on the vaccination card and the picture ID and keep record of the amount of visitors and if they are fully vaccinated in their visitor's log.
8. The fully vaccinated persons who want to make use of the line boats have to send a copy of their COVID-19 vaccination card together with the GTI passenger ticket agreement to the GTI dispatcher.
9. Nobody is allowed inside the accommodation except the PSC- and Health Department officers and the person mentioned in article 6 paragraph 6.

10. In extraordinary circumstances, e.g. multiple buyers on a vessel with multiple layers of cargo, the agent and or the GTI terminal can ask the Health Department for an exemption of the maximum persons allowed onboard.

Article 5 Requirement and restrictions type 1 vessels

1. Exchange of documents and samples required for type 1 vessel will only be done by buckets, baskets and or pouches and communication shall only be done via VHF-radio.
2. Shell doors are not allowed to be used by the line boats
3. The crew on the line boat deck and/or barge deck needs to wear face mask and gloves during bucket, basket, hose or pouch transfer.

Article 6 Requirements and restrictions type 2 Green light “Persons who are fully vaccinated on St Eustatius only” categorized vessel

1. Only the persons mentioned in article 4 paragraph 2 are allowed to board these vessels.
2. These persons have to wear their PPE as mentioned in article 2. 2
3. The pilots have to be escorted via the outside stairs to the bridge.
4. The crew who escorts the pilot to the bridge and the bridge team shall wear at least gloves and face mask.
5. The pilots who boarded the vessels shall afterwards report their physical status and body temperature on a daily basis to the Health Department.
6. Only the pilot who stays on a Single Point Mooring (SPM) vessel is allowed inside the accommodation of the SPM vessel.
7. The persons mentioned in article 4 paragraph 2 are allowed to board the vessels day and night

Article 7 Requirements and restrictions type 2 Green light “4, 8 or 12 entries in the visitors logbook only” categorized vessel

1. Only the persons mentioned in article 4 paragraph 3 are allowed to board these vessels.
2. These persons have to wear their PPE as mentioned in article 2.1 or 2.2
3. The pilots have to be escorted via the outside stairs to the bridge.
4. The crew who escorts the pilot to the bridge and the bridge team shall wear at least gloves and face mask.
5. The persons mentioned in article 4 paragraph 3 are allowed to board the vessels day and night.

Article 7.1 Additional requirement and restriction type 2 Green light “4 entries in the visitor’s logbook only” categorized vessel

The pilots who boarded the vessels “4 entries in the log book only” shall afterwards report their physical status and body temperature on a daily basis to the Health Department. The other persons who boarded the vessel shall, only in case of sickness or high body temperature, report themselves to the Health Department.

Article 8 Requirements and restrictions for Line boats, Barges and Tug boats

Only the in Article 4 paragraph 2 mentioned persons are allowed to board these vessels. The management of the line boats, barges and tug boats are not allowed to board their vessels unless they have permission from the Health Department as indicated on the for these vessels designated Health Clearance.

Article 9 Quarantine

Vessels that fall in the category of type2 red light will be placed under quarantine outside the territorial waters.

Article 10 Visitors Log

All type 2 vessels shall, after departure, send a copy of the visitor’s log St Eustatius to the vessels agent, who will forwarded it to the Health Department, Statia Harbor and Shipping Inspectorate.

Article 11 Implementation

1. This regulation goes into effect immediately upon publication.
2. For the purpose of this regulation under ship is understood vessel and vice versa.
3. Upon entry into force of this regulation, the Maritime Regulation COVID-19 Sint Eustatius July 2nd, 2020 is repealed.
4. Decisions made based on the regulations mentioned in paragraph 2 remain valid and are considered to be made based on this regulation.
5. This regulation may be quoted as “Maritime Regulation COVID-19 Sint Eustatius April 15th 2021.

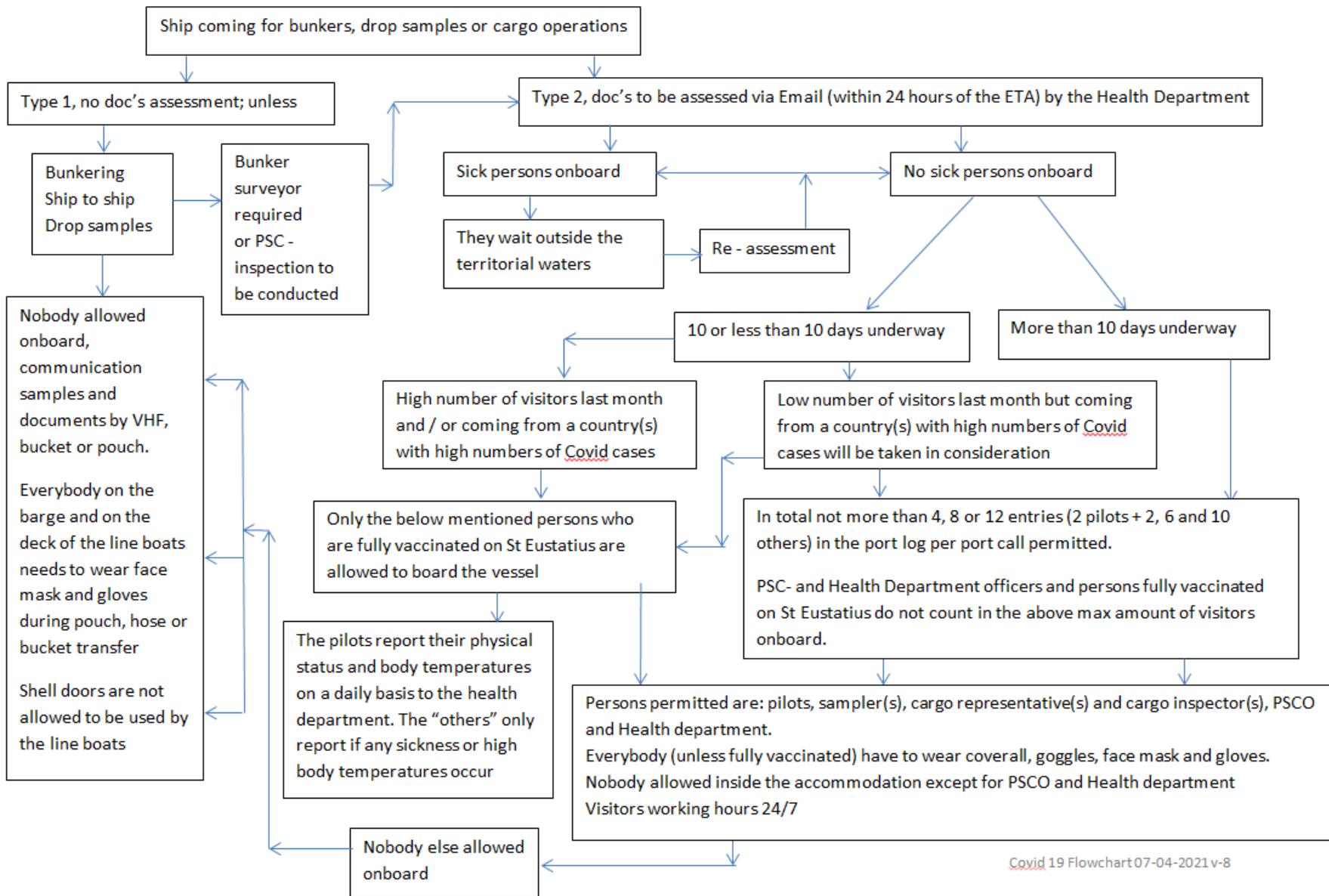
The Deputy Government Commissioner April 13th 2021

Mrs. A. Francis*

* As per article 6 of the Recovery Provision Sint Eustatius Act

Appendix:

- Flow chart “vessels coming for bunkers, drop samples or cargo operations”
- Health Clearance Questionnaire



Covid 19 Flowchart 07-04-2021 v-8



Sint Eustatius Caribisch Nederland

St Eustatius Health Department Clearance Questionnaire
To be filled in by captain and to be send to the agent one day (24 hours) before arrival

Estimated date and time of arrival			
Ship's name			
Local Ship's agent			
Total amount of crew onboard			
Is there any crew member sick at this moment; if yes , describe the symptoms or diagnose			
Has / had any crew member a body temperature above 37 °C; Please send the temperature log from the last 10 days to your agent?			
Is any crew member showing any of the Covid 19 symptoms: flu, fever, cough and / or cold			
Were there any entries made in the Medical log. Please send a copy of the medical log (names to be covered for privacy reasons) from the last 10 days to your agent?			
Last ports last 10 days	Dates Arrival - Departure	Amount of visitors	
Use below format			
Houston, USA	12 – 13 September 2020	9 persons excl. pilots	
Please send a copy of the visitors log from the last 10 days to your agent?			

Describe the ship's protocol for visitors who want to board the vessel, name at least: Temp. taken by crew (yes or no), compulsory PPE, Covid questionnaire in use (yes or no) allowed in- or outside the accommodation, Pilots via outside staircase (yes or no), deck office installed etc.	
Did any person go ashore, during the last 10 days , for a doctor, dentist or other reason? If yes; which port, date, the amount of persons the visit details (PPE, taxi, duration etc.)	

Was there any crew change during the last 10 days ? If yes, which port, date, amount of persons, their itinerary, if applicable the details of the overnights, country, city and duration	
---	--

I declare that the above is the truth and I am aware that hiding or falsifying the situation onboard can have serious consequences.

Name captain:

Signature captain:

<p>Instructions questionnaire: This questionnaire is a consequence of the Covid 19 pandemic, therefore you have to tell the truth, not telling the truth can have serious consequences.</p> <p>Required attachments to the "health clearance mail" to the agent:</p> <ol style="list-style-type: none"> 1) This completely filled in Health Department clearance questionnaire 2) Copy of the crew temperature log; from the last 10 days 3) Copy of the medical log (names covered for privacy reason); from the last 10 days 4) Copy of the visitor's log; from the last 10 days
<p>Instructions before the green light is given: Raise and fly the yellow "Q" flag on arrival. Nobody is allowed to board the vessel until the vessel received clearance from the Health Department.</p>
<p>Instructions when the green light is given: Only the pilot(s), samplers, cargo representatives, PSCO and Health Department officers in PPE, are allowed to board the vessel with the following restrictions as indicated by the Health Department below, for the whole time in port.;</p> <ol style="list-style-type: none"> 1) fully vaccinated persons only 2) only 4, 8 or 12 (2 pilots and 2, 6 or 10 others) entries in the visitor's log; <p>The persons who are fully vaccinated on St Eustatius do not count in the max amount of 4, 8 or 12 visitors onboard. These fully vaccinated persons, who do not want to be counted for on these categorized vessels, have to show the original or a copy of their Covid 19 vaccination card at the gangway.</p>

The ship's crew has to keep record of the amount of visitors and if they are fully vaccinated in their visitor's log. Copy of visitor's log St Eustatius to be send to the ships agent after departure.

The persons who are fully vaccinated are falling under a less stringent PPE regime. Those persons need to wear, as a minimum, a face mask (type KN95 or N95) and gloves.

If someone else or more people want to board your vessel, deny access and report the breach of protocol to your agent or St Eustatius harbor (harbour@statiagov.com).

The crew who picks up the pilot and the bridge team has to wear at least gloves and face mask. The pilot(s) to be escorted via the outside stairs to the bridge.

Nobody, except for PSC- and Health Department officers, are allowed inside the accommodation and 1,5 meter social distancing has to be kept at all time.

Instructions if the situation onboard changes:

When the situation onboard changed, in relation to any of the questions, after the health clearance has been given, the harbor authorities (harbour@statiagov.com) and the agent have to be informed immediately. The issued health clearance is then no longer valid and the ship needs to be interviewed before a new health clearance can be issued.

To be filled in by the St Eustatius Health Department

	Green Light, only persons who are fully vaccinated on St Eustatius are allowed to board the vessel***	Green Light, only 4 entries in the visitors log allowed	Green Light, only 8 entries in the visitors log allowed	Green Light, only 12 entries in the visitors log allowed	Red Light
Date					
Time					

There are three remarks for Box 1:

***The fully vaccinated (2 times vaccinated) persons, who want to board this category vessel, have to show the original or a copy of their St Eustatius "Registration card for Covid 19 vaccination" at the gangway.

***The name on the Covid 19 registry card to be thoroughly checked in comparison with the picture ID

*** If a partly or unvaccinated person wants to board your vessel, deny access and report the breach of protocol to your agent or St Eustatius harbor (harbour@statiagov.com).