

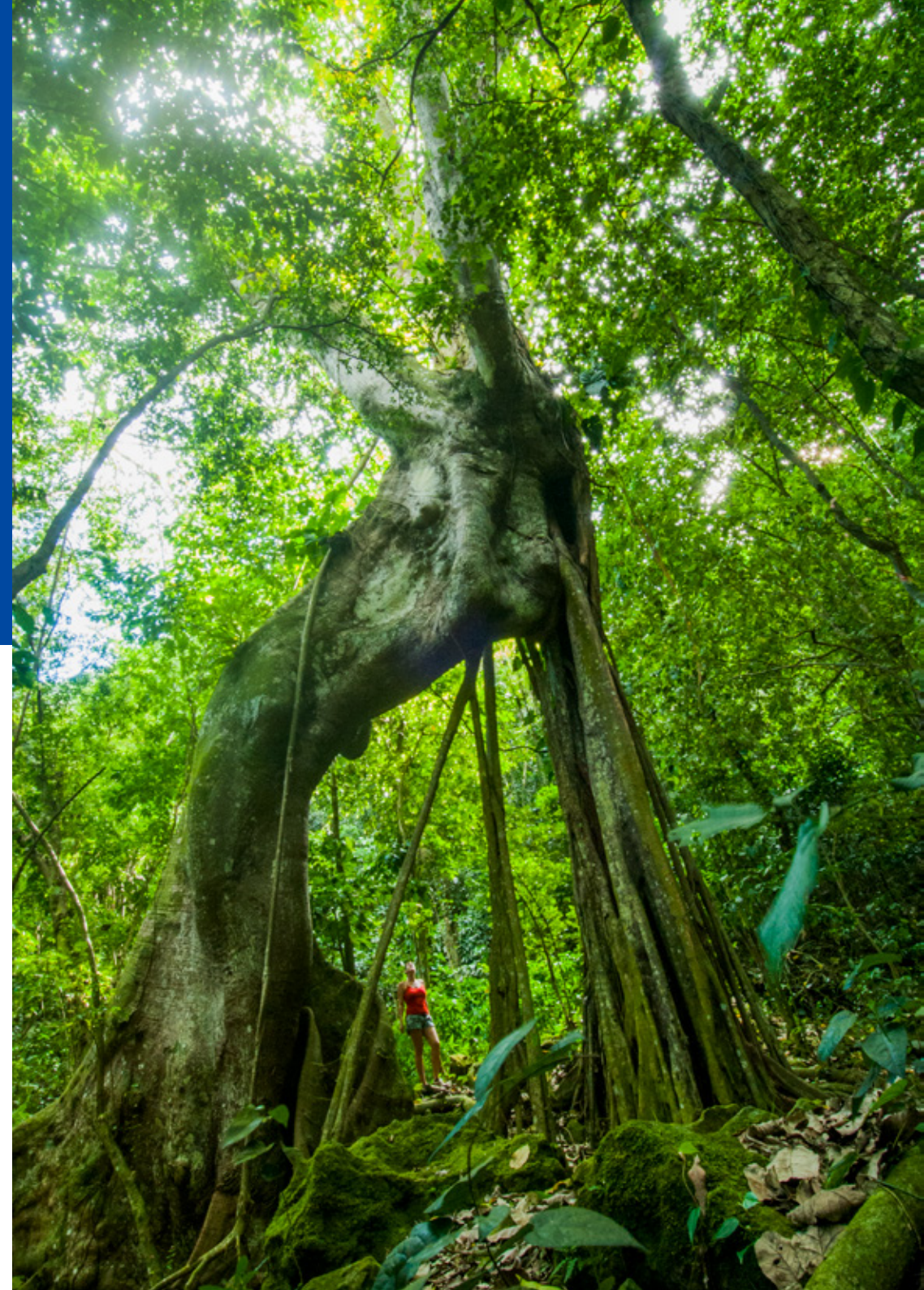
Strong Roots

Masterplan Social Domain



Social Domain
The Public Entity St. Eustatius

2021 – 2025



Building a strong community



Dear residents of Statia,

The Island Government of St. Eustatius aims to empower every citizen to develop to their full potential and contribute positively as a world citizen.

Becoming a positive world citizen is a comprehensive overarching undertaking that must involve the participation of the entire community.

The Directorate of Social Domain as part of the Public entity of St. Eustatius is cognizant of its important role in providing the community with the necessary tools to develop STRONG ROOTS that will withstand and endure the challenges that our community may face. With preventative and a holistic approach being the cornerstone of our strategy.

The strategy which will be applied firstly has to do with the **GOLDEN CIRCLE**.



We envision a community which is empowered to be resilient, culturally engaged, well rounded, proud and productive. We see citizens fulfilling their individual capacities. We envision St. Eustatius with a healthy wellbeing in which OLE and citizens alike thrive. We believe in an inclusive community without barriers which impedes the growth. A green community in the broadest sense would uphold sustainable development goals This will be done by having a strong and professional civil core. They will be facilitators in providing the necessary tools which will equip the courageous community of St. Eustatius. Statians will be empowered to grasp every opportunity

to inspire and transform. The professional civil core will use every challenge as a stepping stone to move ahead. Continuously stronger while taking into account each our economic and social context.

A community that stands firm on strong roots like a tree planted on the waterside which blooms in spite of the tides eroding its foundation.

A community and people with STRONG ROOTS.

Kind regards,
Carol Jack
Director Social Domain



Table of Content

	4
1. Introduction	6
- goal	
- areas of life and policy subjects	
- why a masterplan Social Domain?	
- writing process	
2. Developments and trends	8
- policy developments	
- trends on St. Eustatius	
3. Vision, goal, assumptions and conditions	11
- vision	
- goal	
- assumptions	
- conditions	
4. Areas of life of the Social Domain and the Sustainable Development Goals	14
- Sustainable Development Goals	
- 4.1 Participation, support and care	
- 4.2 Youth and family	
- 4.3 Work and lifelong learning	
- 4.4 Leisure	
ANNEX 1: implementation overview	22
ANNEX 2: overview of legal frameworks	39

1. Introduction

The policy of the Social Domain is focused on well-being of all residents of St. Eustatius. Living life in well-being is more than just being healthy. It touches upon many aspects of life, including work, security, family life and social participation. To create the environment that enables all residents of St. Eustatius to live life in well-being, the Social Domain assesses different areas of life in coherence. The holistic view on well-being, as guiding principle for the Social Domain, is anchored in policy and results in an integrated approach to service delivery.

Goal

The Social Domain is made up by different policy fields. The Masterplan offers an overarching framework for these policy subjects, for consistency in policy and to focus the collaboration with partners. The Social Domain is proactive in developing services by being responsive to the need of the community.

Areas of life

The implementation of the Masterplan takes place in the daily lives of residents. The plan addresses four areas of life:

1. Participation, support and care
2. Youth and family
3. Work and lifelong learning
4. Leisure

Why a masterplan Social Domain?

The Masterplan is meant for the residents of St. Eustatius, Island Council members and professionals of various organiza-

tions. The Masterplan familiarizes the reader with what the Social Domain stands for.

With substantial expansion of tasks of the Social Domain, for instance after decentralization of preventive youth care, it is time to recalibrate its policy on the local level. The Masterplan is part of the Strong Roots trajectory, which enhances the Social Domain. This plan supports the Strong Roots process by offering guidance as a working document for professionals involved in renewing service delivery, in the period 2021 till 2025. With the Masterplan, the Public Entity sets the agenda of the Social Domain, also for the dialogue with partners from higher tiers of Government.

Writing process

The Strong Roots process was started in collaboration with Social Domain partners, early 2020. Many partners were

involved in the writing of this Masterplan. In stakeholder consultation sessions, interviews and through studying of policy documents, their input was included. Partners were asked to contribute to:

- a policy narrative
- goals, targets and priorities for the years to come
- means of implementation, activities, services for the years to come

This plan is based on valuable contributions of stakeholders, including the St. Eustatius Housing Foundation, the Ministry of Health Welfare and Sports, the New Challenges Foundation (NCF), the Sports Foundation (SSFF), the Expertise Centre Education Care (ECE), the Ministry of Social Affairs and Employment, the National office of the Caribbean Netherlands (RCN) Social Affairs and Employment, the Economy, Nature and Infrastructure department (ENI) of Public Entity of St Eustatius and Ministry of Justice and Security in the Dutch Caribbean.

About the content

Chapter 2 briefly describes several important developments and trends. Vision, goal, assumptions, and conditions are stipulated in chapter 3. Chapter 4 goes into the four areas of life that the Masterplan Social Domain addresses. Goals and targets are related to the Sustainable Development Goals (SDGs). Attached to the Masterplan is the Implementation program. This is a working document that describes priorities to work on with partners, in the developing the services of the Social Domain.



2. Developments and trends

Policy for the Social Domain on St. Eustatius does not stand alone. It is part of interplay of actors and developments, both on- and off-island. It depends on national regulations and division of tasks with regional and local partners. This demands coordination with our counterparts in The Hague, on Bonaire and with organizations on the island. As tasks and responsibilities of the Public Entity grow, so does the organization and its professional capabilities.

Policy developments

Most important developments for St. Eustatius' Social Domain concern:

- A benchmark for a social minimum was published in 2019. It focusses the efforts of the Public Entity and the National Government in alleviating poverty and closing the gap between income and living costs¹.
- To lower costs of living, the Ministry of Interior Affairs and Kingdom Relations is exploring the possibility of rental subsidy for affordable housing. A pilot was launched on Saba, St. Eustatius will follow suit.
- In 2018, the St. Eustatius Housing Foundation, Woonlinie and the Ministry of the Interior and Kingdom Relations have agreed to build at least 50 social housing units by 2028.
- The Ministry of Social Affairs and Employment is working on a regulation that arranges the provision of financial assistance and benefits and is aimed at activating persons to participate in society on the highest level possible, with a primary focus on labor market participation. This regulation will function line with the Participatiewet in the European Netherlands. Wage cost subsidies will be introduced to boost cooperation with employers. A sheltered work program for persons with a large distance to the labor market will be implemented.
- Caribbean Netherlands Sport and Prevention Agreement was signed on St. Eustatius in 2019. The purpose of this agreement is a healthier community with more focus on prevention and the importance of a healthy lifestyle. Themes include obesity, alcohol abuse, drug use, sport exercise, sexual health and improvement of the organizational structure in sports.

- A prevention clinic on St. Eustatius focused on healthy lifestyle to prevent cancer, diabetes and hypertension is being set-up. As part of the approach focused on prevention, the Strong Roots prevention program was launched in 2019. It aims to increase opportunities for children growing up in low income households to participate fully in the community.
 - In October 2020, the launch of a WMO-hotline for seniors of each of the BES-islands was announced by the state secretary. On St. Eustatius the support for elderly persons applying for services such as house-keeping or modification of homes for accessibility is invested with CCC Home care, instead of setting up such hotline separately.
 - The Public Entity St. Eustatius is committed to UN Convention on the Rights of Persons with disabilities, intended to protect the rights and dignity of persons with disabilities. It is working with the Ministry of Health, Welfare and Sport to develop an implementation program, including labor market participation initiatives for persons with physical and mental disabilities.
 - The Social Domain has drafted a Poverty Alleviation Policy for the period of 2020 – 2024.
 - The Public Health department developed a Public Health policy for 2020 –2026 with support of the PAHO.²
 - An MOU between the Public Entity and UNICEF was signed in 2020, promoting children's rights as the norm. It aims to increase knowledge and respect for children's rights, enabling children and adolescents to flourish, reach their full potential and participate in secure and inclusive learning environments.
 - The Best4Kids program was launched on St. Eustatius in 2020, aimed at strengthening childcare. It entails measures such as enhancing pedagogical policy, training of professionals and requirements for a healthy diet. A draft Law Childcare in the Caribbean Netherlands is expected to be established in 2021, in line with the Best4kids program, setting the basic rules for childcare in the Caribbean Netherlands.
 - A Comprehensive Cultural Framework 2020 – 2024 for St. Eustatius has been drafted by the department of Culture of the Public Entity.
- Trends on St. Eustatius**
Trends affect the behavior and lifestyle of residents. A trend can have a positive influence on behavior and the lifestyle of residents, but it can also have a negative effect. If a trend has a negative influence on the lifestyle of St. Eustatius residents, the Social Domain

may need to act. It will often concern interventions focused on prevention.

Examples of positive trends among the population

- Most male residents (59%) on St. Eustatius meet the Dutch Physical Activity Guidelines for sufficient exercise.³
- Most residents who are part of the labor force have jobs. 74.1% of men and 68.6% of women are employed.⁴ Labor market participation of women has gone up over the last decades.
- A survey shows that 13% of participants on St. Eustatius smoke. Overall, smoking levels are lower than in Bonaire and Saba.⁵

Examples of negative trends among the population

- Almost 40% of households have an income that is lower than the average monthly budget needed to cover basic living expenses. Some residents depend on irregular, informal jobs for income. In some cases, debts are covered by informal loans.⁶
- Under half of minors live in a two-parent household. High poverty levels among single female-parented households, especially in combination with low education levels and unemployment, are linked to behavioral problems with children.⁷

- Not all seniors have family or friends to support them, as they grow older. People who need help do not always ask for it, because they do not like to admit that things are not going well.⁸
- The number of persons with non-communicable diseases (NCD) like obesity and diabetes is high. These diseases may cause strokes, kidney failure and immobility in the future.⁹

Trends, developments and interventions on St. Eustatius

The Social Domain focuses on trends and developments in the areas of life 'Youth and family', 'Work and Lifelong learning', 'Participation, support and care' and 'Leisure'. Further elaboration follows in chapter 4 and in the attached implementation program.

¹ Source: Onderzoek naar een ijkpunt voor het Sociaal minimum in Caribisch Nederland, Regioplan (2018)

² Pan American Health Organization

³ Source: National Multisectoral Action Plan for the Prevention and control of non-communicable diseases in Sint Eustatius 2020-2026

⁴ Source: Labour force on Dutch Caribbean islands, CBS (2019)

⁵ Source: Source: National Multisectoral Action Plan for the Prevention and control of non-communicable diseases in Sint Eustatius 2020-2026

⁶ Source: Onderzoek naar een IJkpunt voor het Sociaal minimum in Caribisch Nederland, Regioplan (2018).

⁷ Source: Situation Analysis Children and Adolescents in the Caribbean Netherlands, UNICEF (2019)

⁸ Oog voor ouderen in Caribisch Nederland, Ombudsman (2019)

⁹ Source: St. Eustatius Health Policy 2020-2026



3. Vision, goal, assumptions and conditions

The Social Domain entails several policy subjects, areas of life and goals. This chapter focuses on the vision, goals, assumptions and conditions of the Masterplan Social Domain for St. Eustatius. It concerns policy for persons from 0 to 100 years old, from family planning to elderly care.

The number of residents of St. Eustatius per 1st of January 2020 is about 3.100, with a slight increase in the population compared to a year prior. The population of St. Eustatius is highly diverse. St. Eustatius is expected to grow from 3.100 inhabitants in 2020 to 3.800

Vision

On St. Eustatius, everyone can reach their full potential. The Social Domain is committed to giving every resident of St. Eustatius every opportunity life has to offer. Social domain stands for a holistic approach to people's devel-



thousand in 2045. The proportion of elderly persons is expected to rise from approximately 15% in 2019 to 25% in 2050¹⁰.

opment. A holistic approach means looking at a person as a whole. The social, cognitive, emotional, physical and spiritual aspects to a persons' life are all intertwined. The Social Domain

works with the citizens of Eustatius to achieve healthy, happy, promising, secure and active lives. Who wants to, can take an extended hand for lifelong development and well-being. From poverty to prosperity, from dependence to self-reliance, from immobility to resilience.

Goal

With the Masterplan Social Domain, the Public Entity of St. Eustatius and partners want to achieve that St. Eustatius is an attractive place to grow up, live, work, have a home and grow old in wellbeing. The islands is a secure environment that offers individual and collective opportunities for development, to enable residents to actively participate in and contribute to society. When necessary, residents have access to the support and care they need.

Assumptions

For implementation of the Masterplan Social Domain, the following assumptions have been formulated:

Stations at heart

Primary focus of the Social Domain is the everyday reality of the residents of the island. Not the services, nor the organization, but the intention of policy is leading to reach well-being goals.

The Social Domain acknowledges that the majority of the population of St. Eustatius is made up by people of faith. Working with the community, the Social Domain is considerate of people's be-

lieves and wishes to work closely with religious organizations in catering to the needs of the community.

A positive attitude towards Social Domain policy

The Public Entity of St. Eustatius has a positive, holistic attitude towards Social Domain policy, with confidence in the resilience of residents and their networks. Promoting development of life skills has a preventive effect, because it increases self-reliance and a healthy lifestyle. It sets the trajectory for lifelong wellbeing outcomes, for example in dealing with relationships, mental health, budget management and physical fitness.

An integrated approach

Where self-reliance and support from family and friends do not suffice, the Social Domain offers an integrated approach and coherence in service delivery. The Social Domain offers services to Statian residents from 0 to 100 years, from family planning to elderly care. The Social Domain implements activities and projects in core groups of professionals, each coordinated by civil servants working for the Public Entity. Tasks can be delegated among partners within these core groups. External experts can be consulted. Social Domain invests in specialization of its organization, so it can offer services to residents in a continuous line, while decreasing dependency on off-island facilities.

Poverty is a root cause

The Social Domain focusses on root causes, instead of symptoms. Many of the problems in the community are related to poverty. Poverty affects access to opportunities and diminishes the capacity to participate effectively in society. It causes insecurity, powerlessness, and exclusion. Social Domain is committed to alleviating poverty in all its forms.¹¹

Well known and accessible to everyone

All Stadians have equal access to services, regardless of age, gender, ethnicity, cultural background, mother tongue, or preferences. Outreaching service delivery is underpinned by proactive communication with the community and partners.

Local solutions work

The public entity wants to offer services, provide support, and cooperate with partners, with the small-scale island situation in mind. Services are organized locally when possible and regional or national when needed.

Conditions

Working together

For policy to reach its goals, Social Domain partners and the Public Entity must continuously work together. Both policy formulation and policy implementation must take place in a well coordinate effort, with all parties committed to cooperation.

Coherence in service delivery

Coherence in service delivery is important to meet the demand of the community. Working together and in consultation with our residence, the Public Entity and Social Domain partners monitor whether service delivery is in tune with what the community needs, what services are missing or where there may be overlap.

The Public Entity St. Eustatius in control

The Public entity St. Eustatius is responsible for Social Domain policy on the island and takes a leading role. With a diverse set of cooperating partners in the Social Domain, coherent and clear policy is a must. What is needed, is decided together. The Public Entity formulates policy in close coordination with partner organizations. Partner organizations are responsible for how they implement policy. Working with partners from higher tiers of Government, the Public Entity remains in charge of the agenda of the Social Domain on St. Eustatius, as legal mandate prescribes. Considering the ever-changing needs of the community and new tasks that become part of the responsibility

Vision, goal, assumptions and conditions

of the Public Entity, developing Social Domain policy and adjusting implementation is an ongoing process. With the kickoff of the Strong Roots trajectory in 2020, a transition was started. Taking control over the effect of Social Domain policy in the daily life of residents is as important as a shared vision and coherent policy.

Knowledge, resources and instruments

For the Public Entity St. Eustatius to perform its task in the Social Domain, it needs modern offices and facilities. A central registration system, safeguarding privacy of residents, that allows creating statistics is a must for monitoring and policy evaluation. For powerful human resources, an upgrade of knowledge and a competitive remuneration of employees are important. New colleagues need to be recruited to expand specialist capacity, for instance in the field of youth work. Sufficient structural budget, appropriate to the local tasks is a basic requirement for Social Domain to serve the residents of St. Eustatius.

¹⁰ Little over half, 1.600 persons, are men and 1.500 are women. Many residents have ties with other islands in the Caribbean or with countries in South America. 34% are Stadians, 9% come from Curaçao or Aruba, 30% from South and Central America, and 12 % from St Marten. 9% comes from North America and 6% from the European Netherlands. The migration balance was negative: 201 new migrants settled on St. Eustatius, while 215 people left the island in 2019. Source: Labour force on Dutch Caribbean islands, CBS (2019) Source: 'Groeï en grijzer Bevolkingsprognose Caribisch Nederland 2019–2050'.

¹¹ CBS (2019) Source, UNDP: <https://www.un.org/press/en/1998/19980520.eco5759.html>

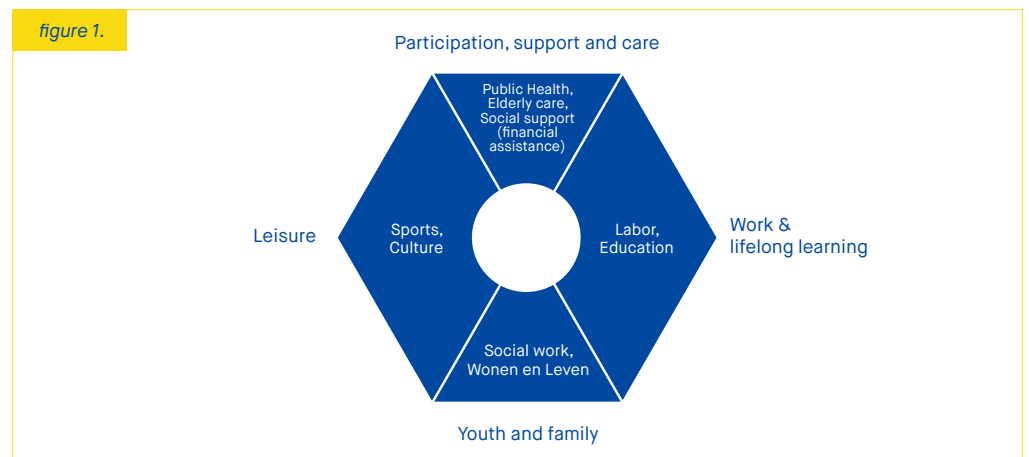


4. Areas of life of the Social Domain and the Sustainable Development Goals

Tasks of the Social Domain are additional to and in support of the self-reliance of residents. Where self-reliance of residents and their networks do not suffice, the Social Domain extends its hand. Together with its partners, the Public Entity offers an integrated approach and coherence in a diverse set of services. The integrated approach takes shape in core groups of the Social Domain, organized surrounding specific needs of the community.

The integrated approach to the Social Domain takes shape in four areas of life. The areas of life of the Social Domain consist of 9 policy topics. The areas of life incorporate the policy topics as illustrated in *figure 1*.¹²

The areas of life are further elaborated in this chapter. Priorities for developing service delivery with partners are presented in more detail in the attached implementation program.



Sustainable Development Goals and Masterplan Social Domain

The Sustainable Development Goals (SDGs) provide an opportunity for public policy making to set out integrated and coherent approaches and tackle the various sources of inequality, which are intersecting in nature.¹³

The policy of the Social Domain directly contributes to a range of SDGs:

- SDG 1 No Poverty
- SDG 2 Zero Hunger
- SDG 3 Good Health and Well-being
- SDG 4 Quality Education
- SDG 5 Gender Equality
- SDG 6 Clean Water and Sanitation
- SDG 8 Decent Work and Economic Growth
- SDG 10 Reduced Inequality
- SDG 11 Sustainable Cities and Communities
- SDG 16 Peace and Justice Strong Institutions
- SDG 17 Partnerships to achieve the Goals



4.1 Participation, support and care

Public Health

Health is essential to everyone's life! The Auxiliary home, the Chapel piece, the Queen Beatrix Medical Center and the Public Health department work together to monitor, promote and protect public health. The Public Health department provides advice, support and care, so that residents can grow up healthy, live healthier lives and stay healthy as they grow older, with special attention for residents who are vulnerable.

The Public Health department is committed to the well-being of residents by contributing to a healthy living environment. It is responsible for youth health care, control of infectious diseases and vaccinations, sexual health, vector control and ship sanitation. Special attention goes out to non-communicable diseases (NCD), to prevent illnesses like diabetes, obesity, and hypertension. A baby clinic aims to protect the health of newborns and their families.

Goal: residents can grow up healthy, live healthier lives and stay healthy as they grow older

Elderly Care

Every resident of St. Eustatius can grow old in socio-economic and financial security, while living in a home that caters the needs of a senior. With home

care services, meals on wheels, home modifications for accessibility, organized transport and daytime activities, the elderly can continue living in their own homes and continue to participate in the community as long as possible. If a senior can no longer live at home and needs professional care, a person can move to an assisted living unit or the Auxiliary home. Familiarity of services and trust in care professionals make services for the elderly universally accessible.

Goal: Providing health care and assistance for older residents, either at home or in care facilities

Financial assistance and benefits

Social Domain offers Social Financial Assistance for residents who have difficulties making ends meet.¹⁴ The National office of the Caribbean Netherlands (RCN) Social Affairs and Employment pays social security benefits on behalf of the Ministry of Social Affairs and Employment, in order to contribute to the social and economic security of senior citizens, parents and people who are temporarily unable to work. The social relief benefit to contribute to the social and economic security of residents in a financial emergency is available as a last resort. Social relief aims to support persons who are temporarily unable to cover basic expenses for household appliances.

Goal: to achieve a sufficient standard of living for everybody on St. Eustatius

SDG targets:

- 1.4 By 2030, ensure that all men and women, in particular the poor and the vulnerable, have equal rights to economic resources, as well as access to basic services, ownership and control over land and other forms of property, inheritance, natural resources, appropriate new technology and financial services, including microfinance
- 1.5 By 2030, build the resilience of the poor and those in vulnerable situations and reduce their exposure and vulnerability to climate-related extreme events and other economic, social and environmental shocks and disasters
- 2.1 By 2030, end hunger and ensure access by all people, in particular the poor and people in vulnerable situations, including infants, to safe, nutritious and sufficient food all year round
- 2.2 By 2030, end all forms of malnutrition, including achieving, by 2025, the internationally agreed targets on stunting and wasting in children under 5 years of age, and address the nutritional needs of adolescent girls, pregnant and lactating women and older persons
- 2.3 By 2030, double the agricultural productivity and incomes of small-scale food producers, in particular women, indigenous peoples, family farmers, pastoralists and fishers, including through secure and equal access to land, other productive resources and inputs, knowledge, financial services, markets and opportunities for value addition and non-farm employment
- 3.3 By 2030, end the epidemics of AIDS, tuberculosis, malaria and neglected tropical diseases and combat hepatitis, water-borne diseases and other communicable disease
- 3.4 By 2030, reduce by one third premature mortality from non-communicable diseases through prevention and treatment and promote mental health and well-being
- 3.5 Strengthen the prevention and treatment of substance abuse, including narcotic drug abuse and harmful use of alcohol
- 3.7 By 2030, ensure universal access to sexual and reproductive healthcare services, including for family planning, information and education, and the integration of reproductive health into national strategies and programs

6.1 By 2030, achieve universal and equitable access to safe and affordable drinking water for all

11.2 By 2030, provide access to safe, affordable, accessible and sustainable transport systems for all, improving road safety, notably by expanding public transport, with special attention to the needs of those in vulnerable situations, women, children, persons with disabilities and older persons

The Labor Office functions as a broker on the labor market for residents by finding, advertising and providing job opportunities. The Labor Office helps residents to prepare for jobs as well, by offering trainings on both professional and employee skills. The New Challenges Foundations (NCF) empowers participants by helping to discover individual interests (labor market orientation).

Aiming for a sustainable result, the Labor Office is looking to help clients find long-term employment. Current pilot projects that apply wage costs subsidies for employers are intended to be used as an example for service delivery in the future. Persons with a large distance to the labor market are activated and encouraged to participate in society, for instance through Statia Doet's annual volunteering projects. The labor office offers support to those who struggle financially, in addition to the RCN.

Goal: To promote and develop the wellbeing of the residence of St. Eustatius by finding, advertising and providing job opportunities and support those who struggle financially

Education

Education is very important! At school, young people learn how to read and write, do math and how to interact with each other. The transfer of knowledge and skills enable persons to benefit from their talents and allow becoming economically and socially independent.

Talent development and labor participation go hand in hand and are of great importance to the community, prosperity and well-being.

Quality of education is one of the responsibilities of the school boards. The Public Entity is responsible for compulsory education, school buildings, special education and student transport. Primary and secondary education students with special needs deserve more and specialized attention in school, in harmony with quality primary education in general. To continue learning after secondary education, many young residents leave the island. The transition to life in a different environment on an island in the region, in the U.S. or The Netherlands, is a challenge. The Strong Roots Program prepares young persons so they will find their way in a new environment and finish their education with obtaining a diploma.

Education is not only essential in a young persons' life. Lifelong learning is key in achieving a person's full potential and in being resilient for when circumstances may demand a change of jobs. The New Challenge Foundation administers The Social Opportunity Program (SKJ). As part of the Adult Education program the NCF offers vocational training and literacy training for adults.

Goal: the Public Entity wants to make sure that high quality and attractive education, with professional attention for special needs, is accessible to residents of the island of all ages.

SDG targets:

1.3 Implement nationally appropriate social protection systems and measures for all, including floors, and by 2030 achieve substantial coverage of the poor and the vulnerable

4.1 By 2030, ensure that all girls and boys complete free, equitable and quality primary and secondary education leading to relevant and effective learning outcomes

4.3 By 2030, ensure equal access for all women and men to affordable and quality technical, vocational and tertiary education, including university

4.4 By 2030, substantially increase the number of youth and adults who have relevant skills, including technical and vocational skills, for employment, decent jobs and entrepreneurship

4.5 By 2030, eliminate gender disparities in education and ensure equal access to all levels of education and vocational training for the vulnerable, including persons with disabilities, indigenous peoples and children in vulnerable situations

4.2 Work and lifelong learning

Labor

Having work to provide income is essential to the wellbeing of the residence of St. Eustatius.¹⁵ Working with employers, schools and partners providing Social Financial Assistance, Social Domain offers Job Programs for different target groups. Together with employers, the Labor Office helps residents who have not been employed for a long time to find a job. Job placement for persons with disabilities, Sheltered work and On the Job training allow optimal participation on the labor market.

4.7 By 2030, ensure that all learners acquire the knowledge and skills needed to promote sustainable development, including, among others, through education for sustainable development and sustainable lifestyles, human rights, gender equality, promotion of a culture of peace and non-violence, global citizenship and appreciation of cultural diversity and of culture's contribution to sustainable development

4.a Build and upgrade education facilities that are child, disability and gender sensitive and provide safe, non-violent, inclusive and effective learning environments for all

5.a Undertake reforms to give women equal rights to economic resources, as well as access to ownership and control over land and other forms of property, financial services, inheritance and natural resources, in accordance with national laws

8.3 promote development-oriented policies that support productive activities, decent job creation, entrepreneurship, creativity and innovation, and encourage formalization and growth of micro-, small- and medium-sized enterprises including through access to financial services for adolescent girls, pregnant and lactating women and older persons

4.3 Youth and family

Social Work

Social work aims to equip persons with the life skills needed that enable them to cope with the challenges of life and make the most of its opportunities. Social work promotes social change and development, social cohesion and the empowerment of people. Everyone on St. Eustatius who needs help is welcome at the Unit Social Support. Together with its professionals a solution is sought for any problem that residents may have. As part of full life-cycle service delivery,

youth services are aimed at prevention through early family support, in coordination with Public Health services. This includes pre-natal care, post-natal care and a baby clinic. It offers social support focused on youth work and pedagogical counseling for (grand) parents, families and professionals. The Unit Social Support is part of a network of professionals that offers a comprehensive approach to domestic violence and child abuse, working closely with the Zorg en Jeugd Caribisch Nederland (ZJCN) and the Court of Guardianship.

To strengthen childcare (daycare, baby care), the Best4Kids program was launched on St. Eustatius in 2020. It

entails measures such as enhancing pedagogical policy, training of professionals and requirements for a healthy diet. The Strong Roots program for young persons going to school supports parents and helps children to develop social and personal skills, for instance through classes in sexual education and training in social skills.

Goal: enable residents, children, youth and their families to flourish, reach their full potential and participate in secure and inclusive learning environments as part of living healthy, happy, promising, safe and active lives.

“Wonen en leven”

St. Eustatius offers an attractive living environment for people from all walks of life. St. Eustatius is an island of growth and development, where people choose to come and live, work, enjoy leisure time and settle with their families. Persons and families who need it, are supported in creating a suitable living situation.

Together with the St. Eustatius Social Housing Foundation, the Public Entity is committed to the availability of housing for people with lower incomes and persons with disabilities. This means that affordable homes are available, well maintained and are pleasant to live in. As residents grow older, the family expands or care needs of residents change, the housing supply can meet their demand.

Goal: St. Eustatius offers an attractive living environment with quality homes and with well-balanced housing supply

with sufficient availability of housing for people with lower incomes and persons with disabilities.

SDG targets:

2.2 By 2030, end all forms of malnutrition, including achieving, by 2025, the internationally agreed targets on stunting and wasting in children under 5 years of age, and address the nutritional needs of adolescent girls, pregnant and lactating women and older persons

3.2 By 2030, end preventable deaths of newborns and children under 5 years of age, with all countries aiming to reduce neonatal mortality to at least as low as 12 per 1,000 live births and under-5 mortality to at least as low as 25 per 1,000 live births

SDGs 4 on ensuring inclusive and quality education for all and promoting lifelong learning opportunities for all, particularly targets to ensure that all girls and boys complete free, equitable and quality primary and secondary education and have access to quality early childhood development, care and pre-primary education;

4.2 By 2030, ensure that all girls and boys have access to quality early childhood development, care and preprimary education so that they are ready for primary education

5.1 End all forms of discrimination against all women and girls everywhere

5.5 Ensure women's full and effective participation and equal opportunities for leadership at all levels of decision-making in political, economic and public life

11.1 By 2030, ensure access for all to adequate, safe and affordable housing and basic services and upgrade slums

tion of cultural and artistic expression, promotion of cultural education with schools, improving cultural documentation and registration, promoting culture through the media, promoting cultural tourism and improving cultural infrastructure.

Goal: to realize the human right of access to, participation in, and enjoyment of the arts, cultural expression, and the preservation of ones heritage, traditions, customs, both tangible and intangible, for all residents of St. Eustatius.

Sports

The Public Entity of St. Eustatius aims to create a dynamic and enabling environment in which persons enjoy and excel in sports. The Public Entity utilizes sports to address health issues, because of its flexible, engaging and educative nature. Promoting a healthy lifestyle can prevent many non-communicable diseases, substance abuse and reduce (child) obesity.

Levels of sport and exercise participation on St. Eustatius have grown in the last years. The Public Entity strengthens sports clubs and sports federations, promotes physical exercise at school and realizes functional, clean, safe and inviting sports facilities. The capacity of the St. Eustatius Sports Facility Foundation (SSFF) was built up with considerable investments. SSFF now functions as sports association for all sports clubs. Sports clubs receive support, to actively contribute to sports and exercise on the island.

Besides promoting sports and exercise through clubs, unbound sports and exercise in public space are encouraged. This includes dance events, walking clubs, exercise through gym or boot camps in the outdoors. There is room for experimentation, to introduce new forms of sports and broadening of activities.

The Public Entity aims to develop sports talent and actively supports young Stadians in their pursuit of a professional sports career. The policy of the Public Entity on Sports is reinforced by the Sports and Prevention Agreement concluded with the Ministry of Health, Welfare and Sport.

Goal: Sports and exercise is part of daily life of all residents of St. Eustatius

SDG targets:

3.5 Strengthen the prevention and treatment of substance abuse, including narcotic drug abuse and harmful use of alcohol.

8.9 By 2030, devise and implement policies to promote sustainable tourism that creates jobs and promotes local culture and products.

11.4 Strengthen efforts to protect and safeguard the world's cultural and natural heritage.

¹² This division has been made to create overview. In many cases, the dividing lines are not that solid. Policy topics, goals and activities of one living area can contribute to the realization of goals in another areas of life as well.

¹³ The Sustainable Development Goals (SDGs) or Global Goals are a collection of 17 inter-linked that were set in 2015 by the United Nations General Assembly and are intended to be achieved by the year 2030. The impact of actions and services is made tangible by connecting policy objectives and activities of the Social Domain to these global goals. The SDGs can create a shared language between professionals from different fields, working on the global goals. Source: VNG De Global Goals in het gemeentelijk beleid, 'Een handreiking voor Nederlandse gemeenten, VNG (2020) & Development Co-operation Report 2018 Joining forces to leave no one behind, OECD (2018) <https://www.oecd-ilibrary.org/docserver/dcr-2018-9-en.pdf?expires=1603111596&id=id&accname=guest&checksum=19313879F1C-1C713A576A8D5D813D374>

¹⁴ Source: Onderzoek naar een lijkpunt voor het Sociaal minimum in Caribisch Nederland, Regioplan (2018)

¹⁵ 66% of persons eligible to work on St. Eustatius has jobs. Of persons 25 to 54-year-olds, 80 % are working. Young people under 25 years are least likely to work (15 percent). Many depend on irregular, informal jobs. Persons with disabilities or persons that speak Spanish and do not speak English, do not have equal opportunities to find a job. Persons out of work often lack the social and work-related skills needed to make them attractive to an employer. Although most persons eligible to work do have jobs, career options are limited. More than one in six persons that are employed work the oil storage terminal of the US-based company oil company on the island. Manufacturing is the largest economic activity. Largest employers on St. Eustatius: Public administration (16%), Health and social work (11%), Education (11%), Accommodation and food services (9%). St. Eustatius population has a net labor participation of 66%. Of persons 25 to 54-year-olds, 80 % are working. Young people under 25 years old on St. Eustatius are least likely to work (15 %).

¹⁶ Source: Culture in the Sustainable Development goals: a guide for local action, UCLG (2018)

4.4 Leisure

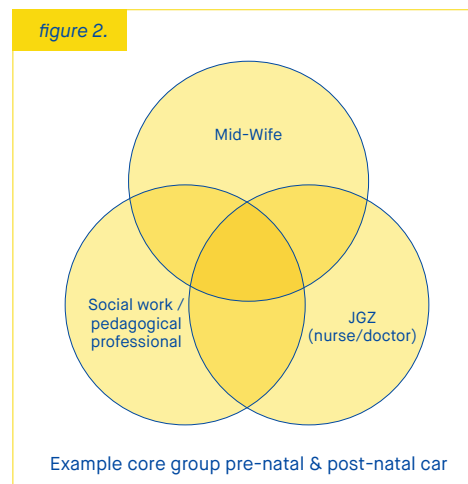
Culture

The story of St. Eustatius is unique and offers a powerful narrative for the Strong Roots approach. Cultural expressions, services, goods and heritage sites can contribute to inclusive and sustainable economic development. Self-expression is empowering, strengthens a sense of belonging, self-worth, identity and social cohesion.¹⁶

The Public Entity focuses on facilitation

Social Domain and Core groups

The Social Domain organizes activities in core groups of professionals, anticipating on occurring situations and the need of the residents involved. These situational core groups are coordinated by civil servants working in Social Domain, who can involve the required expertise by reaching out to partner organizations. Tasks can be divided among partners within the core group and additional external expertise can be called in when needed. Guiding principle is that the civil servant remains the 'owner' of the given project or activity.



Our partner organizations

Core groups can be formed in different compositions with our partner organizations. These organizations include, but are not limited to:

1. Auxiliary home
2. BES Care Logistics
3. Chapelpiece centre
4. Civil Society Organizations
5. Court of Guardianship
6. Culture department (the Public Entity St. Eustatius)
7. Day Care Centers
8. Directorate Economy, Nature & Infrastructure (the Public Entity of St. Eustatius)
9. Directorate Transport (the Public Entity St. Eustatius)
10. Expertise Centre Education Care (ECE)
11. Finance Department (the Public Entity St. Eustatius)
12. Government Information Services (the Public Entity St. Eustatius)
13. Health Insurance Office (ZVK)
14. Human Recourse Department (the Public Entity St. Eustatius)
15. Indicatie commission Health Care
16. Labor Department Public Entity St. Eustatius
17. Legal Affairs the Public Entity St. Eustatius
18. Lions club
19. Mental Health Caribbean
20. Ministry of Internal Affairs and Kingdom Relations
21. Ministry of Education, Culture and Science
22. Ministry of Health, Welfare and Sport
23. Ministry of Justice and Security
24. Ministry of Social Affairs and Employment
25. Out of school centers A+, Mega D Youth Foundation, Daughters of the King
26. Dutch Caribbean Police Force St. Eustatius
27. Public Health Department St. Eustatius
28. Queen Beatrix Medical Centre
29. RCN Social Affairs
30. Reclassering Caribbean Netherlands
31. Religious organizations
32. School boards/directors
33. Social work assistance
34. Sports clubs
35. St. Eustatius Sports Foundation (SSFF)
36. St Eustatius National Parks Foundation (STENAPA)
37. St. Eustatius Center for Archaeological Research (SECAR)
38. St. Eustatius Health Care Foundation Home Care
39. St. Eustatius Health Care Foundation Queen Beatrix Medical Center
40. St. Eustatius Historical Foundation
41. St. Eustatius Utilities Company (STUCO)
42. Unit Social Support Public Entity St. Eustatius
43. Zorg en Jeugd Caribisch Nederland (ZJCN)



Attachment 1. Implementation program

The integrated approach to the Social Domain takes shape in four areas of life. The areas of life of the Social Domain are made up of 9 policy topics.

This division has been made to create overview. In many cases, the dividing lines are not that solid. Policy topics, goals and activities of one living area can contribute to the realization of goals in another areas of life as well. Priorities for developing service delivery with partners are presented in more detail in this implementation program.

Finances

For the implementation of the comprehensive program, various resources are brought together from different sources of funding: national resources and regular resources, supplemented with resources from partners with which the Public Entity collaborates. The regular resources are deployed both for the performance of statutory duties and for the implementation of local policy.

changes to the policy commitment per living area. Furthermore, the implementation of the policy gives direction to and priorities (agenda) for the cooperation of partners in the Social Domain on St. Eustatius.

Evaluation

The Social Domain Masterplan is established for the period 2021-2025 and functions as a working document. In order to know whether the policy is effective and to be able to respond to new developments, mid-term evaluations follow. The evaluation can lead to policy adjustments and additions or

Public Health

Participation, support and care

Priorities (tangible, quantified where possible)	Measures/activities	Planning	Means/funding	Who? (core group)
The Caribbean Netherlands Sport and Prevention Agreement was signed on St. Eustatius in 2019. The purpose of this agreement is a healthier community with more focus on prevention and the importance of a healthy lifestyle. Themes include obesity, alcohol abuse, drug use, sport exercise, sexual health and better organizational structure in sports	The Prevention Clinic for a healthy lifestyle is launched with the aim to prevent non communicable diseases, such as cancer, diabetes and hypertension, through an outreaching community approach.	2021	Ministry of Health, Welfare and Sport	Public Entity St. Eustatius, Public Health Department
A long-term strategy for Health Care on St. Eustatius that addresses the need for and organization of care on the island for the next 15 years.	Young persons on a healthy weight program/ Jongeren op Gezond Gewicht (JOGG), draft and implement plan.	2021, 2022	Sports and prevention Agreement/ Ministry of Health, Welfare and Sport	Public Entity St. Eustatius, Public Health Department, Out of school program (A+, Daughters of the King, SSFF and Mega D Youth Foundation), Best4kids Day care centers
	The number of patients with chronic or end stage kidney failure is substantial. These patients must travel to St. Maarten to have the dialysis treatment they depend on up to three times a week. This is a serious impediment of their quality of life. The Public Entity keeps advocating to the capacity for dialysis on island, to minimize the number of patients having to travel a lot every week for the remainder of their lives. OLE will explore what different types of dialysis can be organized on island. This includes exploring what type of equipment and training of staff are needed. Practices on islands in the area can serve as an example.	2021, 2022	Ministry of Health, Welfare and Sport	Public Entity St. Eustatius, Public Health Department, St. Eustatius Health Care Foundation,

Priorities (tangible, quantified where possible)	Measures/activities	Planning	Means/funding	Who? (core group)
	For a healthy lifestyle, awareness about healthy diets, including fresh fruit and vegetable cultivation on St. Eustatius is promoted, by supporting backyard gardening and local farmers.	2021, 2022	Sports and prevention Agreement/ Ministry of Health, Welfare and Sport, Ministry of Social Affairs and Employment	Public Entity St. Eustatius Economy, Nature and Infrastructure, Public Health Department, STENAPA, local farmers, Labor Department
	The plan functions as an overarching framework for services of White Column partners, gives direction to their collaboration and offers guidelines for policy of each organization. Based on an analysis of the required care relating to demographic developments on St. Eustatius, the division of tasks is recalibrated for the years to come.	2021	Public Entity of St. Eustatius, Special allowances	St. Eustatius Public Health Department, St. Eustatius Health Care Foundation, Auxiliary home, Mental Health Caribbean, Chapel Piece
The Public Entity St. Eustatius is committed to UN Convention on the Rights of Persons with disabilities, intended to protect the rights and dignity of persons with disabilities.	Foundation Training Advice Activity Centre for persons with disabilities to be established.	2021	Budget UN Convention and WMO fund Ministry of Health, Welfare and Sport Public Entity of St. Eustatius, Public Health Department Special allowances	Public Health Department Special allowances My Health Foundation, Ministry of Health, Welfare and Sport
	Develop an implementation program, including labor market participation initiatives for persons with physical and mental disabilities.	2021, 2022, 2023, 2024	Public Entity of St. Eustatius, Special allowances, Ministry of Health, Welfare and Sport	Public Entity of St. Eustatius, Special allowances, Ministry of Health, Welfare and Sport

<p>The Public Entity St. Eustatius is committed to UN Convention on the Rights of Persons with disabilities, intended to protect the rights and dignity of persons with disabilities.</p>	<p>The Public Health department is developing into a St. Eustatius Area Health authority (GGD) that can adequately perform public health tasks in the field of emergency care, with structural or incidental support in specific task areas where necessary.</p>	<p>2021, 2022</p>	<p>Ministry of Health, Welfare and Sport</p>	<p>Public Entity St. Eustatius, Public Health Department</p>
---	--	-------------------	--	--

Elderly Participation, support and care

Priorities (tangible, quantified where possible)	Measures/activities	Planning	Means/funding	Who? (core group)
<p>Prevention of Social isolation of the elderly</p>	<p>Daytime activities, outreaching home visits, client council for the elderly to include in participation process in service delivery.</p>	<p>2021, 2022, 2023, 2024</p>	<p>Lump sum funding</p>	<p>CCC Homecare, Prevention clinic, Auxiliary home</p>
<p>Expansion of elderly care in line with increase of number of elderly persons on St. Eustatius and broaden offered care services based on established needs.</p>	<p>The Auxiliary home services will be broadened with light medical care for the elderly.</p>	<p>2022</p>	<p>WMO fund Ministry of Health, Welfare and Sport</p>	<p>Auxiliary home, St. Eustatius Public Health Department</p>
	<p>Expansion of capacity for psychogeriatric care at the location of the Queen Beatrix Medical Centre and the Auxiliary home, for mental care for the elderly. For example, dementia and long-term Mental Health care.</p>	<p>2022</p>	<p>WMO fund Ministry of Health, Welfare and Sport</p>	<p>Auxiliary home, St. Eustatius Public Health Department, St. Eustatius Health Care Foundation</p>
	<p>Five additional assisted living units will be finished at the Felicia Van Zanten Complex.</p>	<p>2021</p>	<p>WMO fund Ministry of Health, Welfare and Sport</p>	<p>Public Entity St. Eustatius ENI & Social Domain, Indicatie Commission</p>
	<p>Indication committee for elderly to assess need for care to be established.</p>	<p>2021</p>		<p>St. Eustatius Public Health Department (OLE), St. Eustatius Health Care Foundation, Auxiliary home, Mental Health Caribbean, Chapel Piece, client council member</p>

Social Support (financial assistance and benefits)

Participation, support and care

Priorities (tangible, quantified where possible)	Measures/activities	Planning	Means/funding	Who? (core group)
To offer services in a so called 'One stop shop' for financial support and labor market integration, RCN and the Labor office of the Public Entity continue to work on further integrating of financial support and labor market integration services. The link between income and work in services offers various tools to further stimulate and reward employment.	Simplify application procedures for assistance and benefits.	2021, 2022	Labor Department (OLE), RCN SZW, Ministry of Social Affairs and Employment	Public Entity of St. Eustatius and Ministry of Social Affairs and Employment
	Proactively inform residents about financial assistance and benefits.	2021, 2022	Labor Department (OLE), RCN SZW, Ministry of Social Affairs and Employment	Public Entity of St. Eustatius and Ministry of Social Affairs and Employment
The Public Entity will continue to work with the Ministry of Social Affairs and Employment to alleviate poverty and close the gap between income and living costs.	Develop a joint approach to poverty alleviation and debt counseling.	2021	Public Entity of St. Eustatius, Special allowances	Public Entity of St. Eustatius and Ministry of Social Affairs and Employment, RCN Social Affairs, Unit Social Support
	To prevent a poverty trap, the Public Entity is advocating for a form of unemployment benefit, to fall back on in case persons lose their job. Lessons can be learned from the assistance offered as part of the Covid 19 package for employers (emergency regulation).	2021, 2022	Public Entity of St. Eustatius, Special allowances	Public Entity of St. Eustatius Ministry of Social Affairs and Employment
	Utility subsidies for gas, water, electricity, and internet for households receiving financial support up to 150% of the social minimum, can be linked to social assistance.	2021, 2022, 2023, 2024	Public Entity of St. Eustatius, Special allowances	Public Entity of St. Eustatius Ministry of Social Affairs and Employment
	A rental subsidy for affordable housing. A pilot was launched on Saba, St. Eustatius will follow suit.	2021, 2022, 2023, 2024	Public Entity of St. Eustatius Ministry of Internal Affairs and Kingdom Relations	Public Entity of St. Eustatius Ministry of Internal Affairs and Kingdom Relations
	Provision of funds for School materials and uniforms	2021, 2022, 2023, 2024	Public Entity of St. Eustatius, Special allowances	Public Entity of St. Eustatius

Labor

Work and Lifelong learning

Priorities (tangible, quantified where possible)	Measures/activities	Planning	Means/funding	Who? (core group)
<p>Activating persons to participate in society on the highest level possible, with a primary focus on labor market participation, by implementation of regulation that arranges the provision of financial assistance and benefits, currently being developed by the Ministry of The Ministry of Social Affairs. This regulation will function in line with the Participatiewet in the European Netherlands.</p>	<p>Sheltered employment, meant as activating day-time programs for persons with a large distance to the labor market, is being set up with employers on the island.</p>	<p>2021, 2022, 2023, 2024</p>	<p>Labor Department (OLE), RCN SZW, Ministry of Social Affairs and Employment</p>	<p>Public Entity of St. Eustatius and Ministry of Social Affairs and Employment</p>
	<p>Several apprenticeships to help persons with a short to medium distance to the labor market is needed, to develop professional skills and find jobs that suit them.</p>			
	<p>Wage cost subsidies can boost the cooperation with employers.</p>			
	<p>A training on the job program to teach technical skills with the oil terminal is being developed.</p>			
	<p>On the job coaching in professions such as construction, bakery and lifestyle services.</p>			
<p>A human capital agenda to optimally connect policy on economic development, educational programs, and labor-intensive sectors. This will allow an optimal match between the labor force and the demand for employees and workers in the future.</p>	<p>A training on the job program as part of the secondary education curriculum and second chance education to teach technical skills</p>	<p>2021, 2022, 2023, 2024</p>	<p>Regional Education Agency (ROA), Ministry of Social Affairs and Employment</p>	<p>ROA, GVP secondary school, second chance education NCF</p>
	<p>Hospitality training as part of the secondary education curriculum and second chance education</p>			

Priorities (tangible, quantified where possible)	Measures/activities	Planning	Means/funding	Who? (core group)
<p>The Public Entity St. Eustatius is committed to UN Convention on the Rights of Persons with disabilities, intended to protect the rights and dignity of persons with disabilities. It is working with the Ministry of Health, Welfare and Sport to develop an implementation program, including labor market participation initiatives for persons with physical and mental disabilities.</p>	<p>Persons with disabilities can be considered for Sheltered work</p>	<p>2021, 2022, 2023, 2024</p>	<p>Public Entity of St. Eustatius, Special allowances, RCN SZW</p>	<p>ENI, STENAPA, CoC, business association</p>
	<p>Wage costs subsidies</p>	<p>2021</p>	<p>Public Entity of St. Eustatius, Special allowances, RCN SZW, Ministry of Social Affairs and Employment</p>	<p>ENI, STENAPA, CoC, business association</p>
<p>Transformation of Labor department to Jobcentre, to offer services in a so called 'One stop shop' for financial support and labor market integration, RCN and the Labor office of the Public Entity continue to work on further integrating of income and work services. The link between income and work in services offers various tools to further stimulate and reward employment.</p>	<p>Recruit Job Coaches Training of staff as Job Coaches</p>	<p>2021, 2022</p>	<p>Public Entity of St. Eustatius, Special allowances</p>	<p>Public Entity of St. Eustatius and Ministry of Social Affairs and Employment</p>
	<p>Enhance Competency analyses through training</p>			
	<p>Implement Slight disability methodology, develop indication competences, through</p>			
	<p>Develop Previously acquired competencies (EVG) instruments to support job seekers</p>			

Education

Work and Lifelong learning

Priorities (tangible, quantified where possible)	Measures/activities	Planning	Means/funding	Who? (core group)
Intensify parental involvement	School teachers and social workers join forces to actively reach out to parents.	2021	Public Entity of St. Eustatius, Special allowances	Compulsory education officer Preventive youth work & pedagogical counseling
The possibility to offer social and financial support for students going abroad to study is being explored.	The possibility to offer social and financial support for students going abroad to study is being explored.	2021	tbc	The Public Entity St. Eustatius Unit Social Affairs, GVP, School boards, parents
Graduates are being tracked and offered incentives to return to the island, so their potential is utilized for the benefit of St. Eustatius.	Tracking takes place based on graduate registration of the Ministry Education Culture and Science, the Public Entity of St. Eustatius links this with the Labor office	2021	Public Entity of St. Eustatius, Special allowances	Public Entity of St. Eustatius, Labor office, Ministry Education Culture and Science
Students with Special Needs take part in regular classes together with other students, with support of the Expertise Centre Education Care (ECE).	To teach children with special needs and to be able to maintain an orderly classroom at the same time, teachers work with a teacher's assistant.	2021	Ministry Education Culture and Science	Public Entity of St. Eustatius, ECE, School boards
	Special needs children deserve a stimulating environment. By offering them more variety in the program during the school day, it is easier to stay engaged.	2021	Ministry of Health Welfare and Sports	Public Entity, ECE, School boards
Additional programming for extracurricular activities for young persons between the ages of 12 and 18 years old is desired	A+ program 12 years and older is developed with Civil Society organizations.	2021	Public Entity of St. Eustatius, Special allowances	A+ NCF GVP

Priorities (tangible, quantified where possible)	Measures/activities	Planning	Means/funding	Who? (core group)
Adult education	The New Challenge Foundation administers the The Social Opportunity Program (SKJ).	2021, 2022, 2023, 2024	Ministry of Internal Affairs and Kingdom Relations	Public Entity of St. Eustatius, New challenge Foundation
	As part of the Adult education program the NCF offers vocational training and literacy training for adults.	2021, 2022, 2023, 2024	Ministry of Social Affairs and Employment	Public Entity of St. Eustatius, New challenge Foundation
	Adult training program is made available for employees of the Public Entity development opportunities.	2021, 2022, 2023, 2024	Public Entity of St. Eustatius, Special allowances	Public Entity of St. Eustatius HR and Social Domain NCF
Implementation of the gezonde school/ Healthy school.	Students who are healthy and often feel better about themselves.	2021, 2022	Public Entity of St. Eustatius, Special allowances	Public Health Department (OLE), school boards
	This contributes to better school performance and reducing early school leaving. Students make healthy choices more quickly and benefit from it later in life. Healthy behavior is stimulated not only at home but also at school. This makes it easier for parents to raise their children in a healthy way. Working with a focus on health makes teaching more interesting for many employees.			
	De gezonde school / the Healthy school approach creates a healthy school environment. A step by step plan achieves long-term effects, together with students, teachers and parents.			

Social Work

Youth and Family

Priorities (tangible, quantified where possible)	Measures/activities	Planning	Means/funding	Who? (core group)
Increase awareness of services, residents should know that they can come to Unit Social support with any question. Whether it concerns parenting problems, money worries or relationship problems, the social support unit works with residents to find a solution.	Communicate about services, for example by appearing on the radio at least once per month by develop information material.	2021, 2022	Public Entity of St. Eustatius, Special allowances	Unit Social Support
Compulsory education	<ul style="list-style-type: none"> - Awareness campaign about importance of education - Support parents and students in studying abroad - Offer refresher courses for low literacy - compulsory education and youth workers intensify cooperation for early intervention and prevent youth from dropping out by supporting young person's going through a difficult time 	2021, 2022, 2023, 2024	Public Entity of St. Eustatius, Special allowances	Schools, school social work, youth welfare, public prosecutor, guardianship council
	Compulsory Education office will be enhanced with administrative system that is reliable, manages information and safeguards privacy.	2021	Public Entity of St. Eustatius, Special allowances	Public Entity of St. Eustatius
<p>Administrative agreement domestic violence and child abuse:</p> <ul style="list-style-type: none"> - advice and hotline for domestic violence and child abuse - legal guidance BES reporting code - expertise promotion - inter-island shelter for domestic violence 	Realizing flexible shelter facility for persons and families in urgent situations, also to be used as time out and temporary care for children and youth	2021, 2022, 2023, 2024	Ministry of Health Welfare and Sports	Ministry of Health Welfare and Sports, Public Entity St. Eustatius Ministry of Justice and Security

Priorities (tangible, quantified where possible)	Measures/activities	Planning	Means/funding	Who? (core group)
Preventive youth work & pedagogical counseling	Parenting shop (Opvoedwinkel) for parents and care givers, where advice and information is available (free of charge) about the upbringing of children and youngsters from 0 to 18 years.	2021	Public Entity of St. Eustatius, Special allowances	Public Entity of St. Eustatius
	Pedagogical counselor joins nurses during home visits 28th week of pregnancy, to establish contact and build relationship with parents.	2021	Public Entity of St. Eustatius, Special allowances	Public Entity of St. Eustatius, CCC
	Pedagogical team develops workshops for parents, topics include co-parenting for separated parents how to keep the well-being of the children in the highest regard, fathers' rights in separation.	2021	Public Entity of St. Eustatius, Special allowances	Public Entity of St. Eustatius
	Embed and secure the pilot on primary youth and family care, linking it to debt counseling and general social work.	2021	Public Entity of St. Eustatius, Special allowances	Public Entity of St. Eustatius
	Sign cooperation agreement ZJCN to coordinate transfer of clients	2021	Public Entity of St. Eustatius, Special allowances	Public Entity of St. Eustatius, CCC, ZJCN
	Establish care structure pedagogical column	2021	Public Entity of St. Eustatius, Special allowances	Ministry of Health Welfare and Sports, ZJCN
	Implement solution-oriented working method	2021	Ministry of Health Welfare and Sports	The Public Entity of St. Eustatius
MOU between the Public Entity and UNICEF was signed in 2020, promoting children's rights as the norm	The team of Unit Social Services embraces child rights in all activities. Social Work team supports school program and Film Festival organized and implemented by UNICEF.	2021, 2022, 2023, 2024	Ministry of Internal Affairs and Kingdom Relations, UNICEF NL	Schools, UNICEF, Public Entity of St. Eustatius

Priorities (tangible, quantified where possible)	Measures/activities	Planning	Means/funding	Who? (core group)
The Strong Roots prevention program aims to increase opportunities for children growing up in low income households to participate fully in the community.	The Strong Roots is expanded with focus on dental care and sugar intake and STD awareness among youth.	2021	Public Entity of St. Eustatius, Special allowances	The Public Entity of St. Eustatius,
The Best4Kids program was launched on St. Eustatius in 2020, aimed at strengthening childcare. It entails measures such as enhancing pedagogical policy, training of professionals and requirements for a healthy diet. A draft Law Childcare in the Caribbean Netherlands is expected to be established in 2021, in line with the Best-4kids program, setting the basic rules for childcare in the Caribbean Netherlands.	The Earl Merkman sports complex is being renovated and redesigned to facilitate out of school care in the context of Best4Kids. A roof will be placed over the Cruyff Court.	2021	Ministry of Education, Culture and Science	The Public Entity of St. Eustatius, daycare and childcare institutions, Ministry of Education, Culture and Science,
	Out of school facility under one roof will be built as a central housing for out of school programs	2021	Ministry of Social Affairs and Employment	The Public Entity of St. Eustatius, A+, Daughters of the King and Youth Foundation and Mega D.

“Wonen en leven” Youth and Family

Priorities (tangible, quantified where possible)	Measures/activities	Planning	Means/funding	Who? (core group)
The St. Eustatius Housing Foundation currently manages 96 social housing units.	All current social housing units are being renovated.	2021, 2022	Public Entity of St. Eustatius, Special allowances	Unit Social Support
	The St. Eustatius Housing Foundation, Woonlinie and the Ministry of the Internal Affairs and Kingdom Relations have agreed to build at least 50 social housing units in 10 years.	2021, 2022, 2023, 2024	Ministry of Internal Affairs and Kingdom Relations, Ministry of Health Welfare and Sports	Public Entity St. Eustatius ENI, St. Eustatius Social Housing Foundation, LICCOM, Woonlinie
	Social Domain is advocating for realization of 30 additional homes in addition to the 50 planned homes is needed, to meet the demand.	2021, 2022, 2023, 2024	Public Entity of St. Eustatius, Special allowances	Public Entity St. Eustatius
	Assisted living apartments: realization of 5 extra assisted living apartments on top of the current 5 apartments in the Felicia van Zanten assisted living complex.	2021	Ministry of Internal Affairs and Kingdom Relations	Public Entity St. Eustatius ENI, St. Eustatius Social Housing Foundation, Woonlinie
A rental tribunal and rental price policy will be instated, to index rental prices based on an income table for St. Eustatius, to be established by RCN. Selection procedure and criteria for social housing will be updated.	The outflow of residents who live in the current social housing units and are no longer eligible due to an increase in income above the income requirements, is stimulated.	2021, 2022, 2023, 2024	Ministry of Internal Affairs and Kingdom Relations	Public Entity St. Eustatius ENI, St. Eustatius Social Housing Foundation
For many residents of St. Eustatius, lack of access to financing is a major threshold in obtaining a home. Often residents are building homes step by step, whenever funds are available.	A flexible, favorable mortgage with the possibility to pay off the loan when funds are available, instead of through a fixed monthly payment, can make building and finishing a home within a short period of time. This will allow families to benefit from their home when they need it, for instance when there are small children.	2021, 2022, 2023, 2024	Public Entity of St. Eustatius, Special allowances Ministry of Internal Affairs and Kingdom Relations	Public Entity St. Eustatius ENI, St. Eustatius Social Housing Foundation

Sports Leisure

Priorities (tangible, quantified where possible)	Measures/activities	Planning	Means/funding	Who? (core group)
Caribbean Netherlands Sport and Prevention Agreement was signed on St. Eustatius in 2019. The purpose of this agreement is a healthier community with more focus on prevention and the importance of a healthy lifestyle. Themes include obesity, alcohol abuse, drug use, sport exercise, sexual health and better organizational structure in sports	School swimming lessons will be further intensified to meet demand.	2021, 2022, 2023, 2024	Taakstelling SSFF	Primary schools and SSFF
	Sports and games for youth during and after school are increased, to reduce boredom and increase exercise for youth with at least 200 participants per week.	2021, 2022, 2023, 2024	Taakstelling SSFF	SSFF, Out of school program, Daughters of the King, MegaD Youth Foundation, A+
	Sports and exercise facilities with sustainable financial exploitation and maintenance scheme under management of appropriate partner organization.	2021, 2022, 2023, 2024	Taakstelling SSFF	SSFF
	A local subsidy arrangement is put in place to stimulate talent development and make participation in sports and exercise possible for youth from low income families.	2021, 2022, 2023, 2024	Taakstelling SSFF	Public Entity of St. Eustatius, SSFF
Alleen jij bepaalt program for youth prevention	Activation of youth through sports activities, offer healthy pastime, through peer to peer approach and role models.	2021	Ministry of Justice and Security	SSFF and GVP school
Vitalization of Sports foundations and sport clubs	Training of SSFF board members and board members of sport clubs.	2021	Taakstelling SSFF	Public Entity of St. Eustatius, SSFF

Culture Leisure

Priorities (tangible, quantified where possible)	Measures/activities	Planning	Means/funding	Who? (core group)
Create, establish, and implement an integrated cultural policy	Finalize concept and start implementation with steering committee of vital partners.	2021	Public Entity of St. Eustatius, Special allowances Ministry of Education, Culture and Science Public Works and Water Management (RWS)	St. Eustatius Center for Archaeological Research (SECAR), St Eustatius National Parks Foundation (STENAPA), St. Eustatius Historical Foundation, St. Eustatius Monument Foundation, Ministry of Education, Culture and Science
	Develop a more organized, coordinated and effective structure that promotes culture in St. Eustatius and mainstream its role within the community.	2021, 2022, 2023, 2024		
Heritage strengthens a sense of belonging, self-worth, identity and social cohesion. The culture department identifies, conserves, protects and promotes cultural heritage	Dialogue about retrieving colonial artifacts	2021, 2022, 2023, 2024	Public Entity of St. Eustatius, Special allowances Ministry of Education, Culture and Science	St. Eustatius Center for Archaeological Research (SECAR) St. Eustatius Historical Foundation St. Eustatius Monuments Foundation Ministry of Education, Culture and Science
	Creating settings and facilities for preservation of historical artifacts			
Facilitation and promotion of cultural and artistic expression, locally and beyond.	Strengthening of cultural organizations	2021, 2022, 2023, 2024	Public Entity of St. Eustatius, Special allowances	St. Eustatius Center for Archaeological Research (SECAR) St Eustatius National Parks Foundation (STENAPA) St. Eustatius Historical Foundation St. Eustatius Monuments Foundation
	Promote subsidy ordinance for CSOs and SMEs to organize cultural activities.			

Priorities (tangible, quantified where possible)	Measures/activities	Planning	Means/funding	Who? (core group)
Promotion of cultural education through the school curriculum and after school projects and institutions.	The Strong Roots program elevates the awareness and availability of culture for the children and youth, strengthen a sense of identity and social cohesion.	2021, 2022, 2023, 2024	Public Entity of St. Eustatius, Special allowances Ministry of Education, Culture and Science	Schools Out of school organizations: A+, Mega D Youth Foundation, Daughters of the King Ministry of Education, Culture and Science Landelijk Kennisinstituut Cultuureducatie en Amateurkunst (LKCA)
	Develop educational modules about cultural awareness and expression. LKCA student boxes modules culture education way to express national program			



Annex 2.

Overview of legal frameworks

The Public Entity has statutory duties that converge in this plan, on the policy areas of different ministries. Underneath a summary of the most important legal frameworks for the Social Domain:

Health insurance

- BES Healthcare Institutions Act ^{(link)17}: Contains elements such as quality of care and governance.
- Public Health insurance decree ^{(link)18}: rules for health insurance for the population of St. Eustatius. Contains elements such as nursing care and day care. Stating 2021, household assistance, meal facilities, customized transport and housing modifications will be included starting 2021.
- Public health ^{(link)19}: Measures that are health protecting and health increasing for the population or specific groups, including the prevention of and early detection of diseases. Article 68 applies to St. Eustatius specifically.
- Youth Services ^{(link)20 & (link)21}: The BES implementation act; states in article 18 that Statia is a provider of youth care, plus a number of additional rules for the implementation of foster care on St. Eustatius.

Daycare

- Island Ordinance Daycare ^{(link)22} and temporary subsidy scheme ^{(link)23}: regulates the preconditions and financing for day care centers.

Education/social domain

- Law Social Opportunities for

Young People BES ^{(link)24}: regulates the preconditions and financing for support and activating programs for youth.

- Law Compulsory education BES ^{(link)25}:

Social security

- The Arbeidswet 2000 BES ^{(link)26}; describes how many hours employees are allowed to work, per day, per week, per month and per quarter. This law also describes how many breaks and rest times employees must be allowed to continue working in a healthy manner.
- The BES Welfare Decree ^{(link)27}; describes rights and obligations regarding receiving social assistance and special assistance.

¹⁷ <https://wetten.overheid.nl/BWBR0028734/2018-08-01>

¹⁸ <https://wetten.overheid.nl/BWBR0029404/2019-03-30>

¹⁹ <https://wetten.overheid.nl/BWBR0024705/2020-07-01>

²⁰ <https://wetten.overheid.nl/BWBR0028063/2020-01-01>

²¹ <https://wetten.overheid.nl/BWBR0043751/2020-07-01>

²² https://decentrale.regelgeving.overheid.nl/cvdr/xhtml/output/Historie/Sint%20Eustatius/47061/47061_1.html

²³ <https://wetten.overheid.nl/BWBR0043533/2020-07-01>

²⁴ <https://wetten.overheid.nl/BWBR0028506/2015-08-01>

²⁵ <https://wetten.overheid.nl/BWBR0030281/2020-08-01>

²⁶ <https://wetten.overheid.nl/BWBR0028202/2020-01-01>

²⁷ <https://wetten.overheid.nl/BWBR0028595/2020-10-07>

Strong Roots